



# GCN-MEP

Gas-Actuated  
Concrete Nailer



(800) 999-5099  
[www.strongtie.com](http://www.strongtie.com)



## GCN-MEP/GCN-MEPMAG GAS-ACTUATED CONCRETE NAILER

The GCN-MEP Gas-Actuated Concrete Nailer is a portable fastener tool for attaching light-duty fixtures to concrete, steel, concrete block (CMU), lightweight concrete over metal deck and cold-formed steel. As a magazine tool, the GCN-MEPMAG is ideal for attaching drywall track, furring strips, hat track and angle track with the GDP-series collated pins. As a single-shot tool, the GCN-MEP is great for attaching mechanical, electrical and plumbing fixtures with pre-assembled pin/accessories such as washer pins, ceiling clips, tophats and threaded studs. The pre-assembled pins for the single-shot GCN-MEP tool use 0.300" fasteners with 0.125" diameter shanks for stronger fastening performance. Both the single-shot and the magazine tool offer portability without the need for cords or hoses, and are actuated with GFC34 gas fuel cells.

### Features:

- Power to drive 0.125" diameter pins
- Flexibility to drive ½" to 1 ½" pins
- Flexibility to drive 0.250" and 0.300" dia. headed pins
- Pin-depth adjustment dial
- Battery charge indicator light
- Comfortable "sure-grip" rubber handle and ladder hook
- Easy start-up procedure: Insert fuel cell, insert battery, load pins, and begin use
- FREE tool first-aid repair program (see back cover)

### Specifications:

- Tool dimensions:
  - Length 12.5" (317.5 mm), 17" (432.8 mm)
  - Tool weight: 6.6 lb (3 kg), 8.3 lbs (3.7 kg) with magazine
  - Height 15.3" (389 mm)
- Tool weight: 8.3 lb (3.7 kg)
- Compatible fasteners:
  - Length ½" (12.7 mm) to 1 ½" (38 mm)
  - Head diameter 0.250" and 0.300"
  - Shank diameter 0.106" to 0.125"
- Average number of shots per battery charge: 3300
- Average number of shots per fuel cell: 1200
- Average cyclic firing rate: 2 shots/second
- Average battery charge time (6V NiMH): 2 hours
- Operation temperature range: 20°–120°F (-6°–49°C)
- Magazine capacity: 42
- Maximum fastenings before reloading: 40

The magazine is designed to retain two pins during use to prevent the tool from discharging without a fastener (which can damage the tool and possibly cause injury). The tool will resume normal operation when additional pins are loaded.

### Minimum Cleaning Required

The GCN-MEP has a very efficient ignition system that provides complete fuel combustion. This results in a cleaner operating tool, which, in turn, results in more tool energy and higher productivity. To maintain maximum level of productivity, periodic cleaning is recommended.

- Only requires cleaning every 20,000 shots
- Easy access to the air filter and piston chamber

### The GCN-MEP Gas-Actuated Concrete Nailer is ideal for fastening:

- Conduit clips
- Ceiling clips
- Low-voltage cable
- Cable straps
- Lath wire for stucco
- Water-proofing membrane



GCN-MEP



GCN-MEPKT or GCN-MEPMAGKT (with magazine)



MEP-MAG1KT sold separately

## FASTENERS & FUEL

### GCN-MEP Gas-Actuated Pins and Assemblies for Mechanical, Electrical and Plumbing (MEP) Applications

New, pre-assembled MEP fasteners are available for use with the GCN-MEP gas-actuated concrete nailer designed for high-volume applications such as affixing conduit clips, rod hangers, and cable ties. With the 0.300" heads, these versatile pins and assemblies can also be used with common powder-actuated tools when fastening into harder substrates (structural steel or extra-hard concrete).

**Code/Standards:** ICC-ES ESR-2811 (GRH, GAC, GW and GTH series)

#### Mechanical, Electrical and Plumbing Pins

All single-shot pins are .125" diameter and 1" in length unless specified.

Model No.	Description	Pack Qty.	Compatible Gas-Actuated Nailer
GRH25-R100	1/4" Rod Hanger with Pin	100	GCN-MEP, T3
GRH37-R100	3/8" Rod Hanger with Pin	100	GCN-MEP, T3
GCC50-R100	1/2" Conduit Clip with Pin	100	GCN-MEP, T3
GCC75-R100	3/4" Conduit Clip with Pin	100	GCN-MEP, T3
GCC100-R100	1" Conduit Clip with Pin	100	GCN-MEP, T3
GCC125-R50	1" Conduit Clip (13 Gauge Steel) with Pin	50	GCN-MEP, T3
GCL50-R50	1/2" Conduit Clamp with Pin	50	GCN-MEP, T3
GCL75-R25	3/4" Conduit Clamp with Pin	25	GCN-MEP, T3
GAC-R100	Angle Clip with Pin	100	GCN-MEP, T3
GCT-R50	Tie-Strap Holder with Pin	50	GCN-MEP, T3
GW50-R200	1/2" Dome Washer with 0.110"/.128" Dia. x 1/2" length step-shank pin	200	GCN-MEP, T3
GW75-R200	1/2" Dome Washer w/ 0.125 Dia. x 3/4" Length Pin	200	GCN-MEP, T3
GW100-R100	1/2" Dome Washer with Pin	200	GCN-MEP, T3
GTS4-5075-R200	1/4" threaded stud (1/4-20 thread), 1/2" thread length, 3/4" shank length (0.127" dia.)	200	GCN-MEP, T3
GTH-R200	Tophat Pin	200	GCN-MEP, T3



GRH



GCC



GCL



GAC



GCT



GW



GTS



GTH



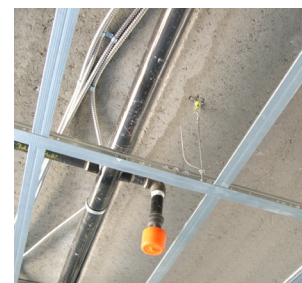
GFC34

#### Fuel Cell

The GFC34 fuel cell is designed to operate with the GCN-MEP gas-actuated concrete nailer and also works with most major-brand gas concrete-nailer tools. Each GFC34 provides an average of 1200 shots, can operate at temperatures as low as 20° F, and altitudes up to 8000 ft. The GFC34 are offered in a 2-per-pack clamshell (GFC34-RC2). One GFC34 is included with each pack of GDP pins.

#### Gas Fuel Cells for the GCN-MEP

Model No.	Description	Pack Qty.	Packs/ Carton	Compatible with these Tools
GFC34-RC2	(2) 34-gram fuel cells	2	6	Simpson Strong-Tie GCN-MEP and GCN-150 Others: TF1100, C3, C4
GFC34	(1) 34-gram fuel cell	1	12	Simpson Strong-Tie GCN-MEP and GCN-150 Others: TF1100, C3, C4



## KITS & ACCESSORIES

### GCN-MEPKT

#### GCN-MEP Gas-Actuated Concrete Nailer Kit

A GCN-MEP can be purchased as part of a larger kit. This kit includes:

- GCN-MEP nailer
- 2 batteries
- Battery charger
- Allen wrenches
- Safety glasses and ear plugs
- Operator's manual/tool schematic
- Rugged tool box



GCN-MEPKT

### GCN-MEPMAGKT

#### Gas-Actuated Concrete Nailer Kit includes:

- GCN-MEP nailer
- MEP-MAG magazine
- 2 batteries
- Battery charger
- Allen wrenches
- Safety glasses
- Operator's manual/ tool schematic
- Rugged tool box



MEP-MAG

The MEP-MAG magazine can be installed on the GCN-MEP tool for installing GDP collated pins.

### EXTENSION POLE KIT/ INFO



### Extension Poles for GCN-MEP, GCN150

Model	Description	Length
PETG-6KT	Complete tool, with boot, handle and one extension	6 ft.
PETG-8KT	Complete tool, with boot, handle and two extensions	8 ft.
PETH2	Handle	2 ft.
PETG	Boot	N/A
PETS2	Pole extension	2 ft.
PETS4	Pole extension	4 ft.

### GDP Collated Pins (requires MEP-MAG1KT) Code/Standards: ICC-ES ESR-2811

Model No.	Description	Qty Pins/ pack +1 Fuel Cell	Compatible Gas-Actuated Nailers
GDP-50KT	0.106" dia. x 1/2" pin	1000	GCN150, GCN-MEP, TF1100, C3
GDP-62KT	0.106" dia. x 5/8" pin	1000	GCN150, GCN-MEP, TF1100, C3
GDP-75KT	0.106" dia. x 3/4" pin	1000	GCN150, GCN-MEP, TF1100, C3
GDP-100KT	0.106" dia. x 1" pin	1000	GCN150, GCN-MEP, TF1100, C3
GDP-125KT	0.106" dia. x 1 1/4" pin	1000	GCN150, GCN-MEP, TF1100, C3
GDP-150KT	0.106" dia. x 1 1/2" pin	1000	GCN150, GCN-MEP, TF1100, C3



GDP

### GDP Collated Step-Shank Pins (requires MEP-MAG1KT)

Model No.	Description	Qty Pins/ pack +1 Fuel Cell	Compatible Gas-Actuated Nailers
GDPS-50KT	1.09"/1.11" dia. x 1/2" pin	1000	GCN150, GCN-MEP, TF1100, C3
GDPS-62KT	1.09"/1.11" dia. x 5/8" pin	1000	GCN150, GCN-MEP, TF1100, C3
GDPS-75KT	1.09"/1.11" dia. x 3/4" pin	1000	GCN150, GCN-MEP, TF1100, C3



GDPS

### GDP Collated Spiral-Knurl Pins (requires MEP-MAG1KT)

Model No.	Description	Qty Pins/ pack +1 Fuel Cell	Compatible Gas-Actuated Nailers
GDPSK-138KT	0.110" dia. X 1 3/8" spiral knurl pin	1000	GCN150, GCN-MEP, TF1100, C3



GDPSK

For load and technical data, see the *Anchoring and Fastening Systems for Concrete and Masonry* catalog or visit [www.strongtie.com](http://www.strongtie.com).



**Ask about our Tool First Aid Program – committed to keeping a working tool in your hands – free of charge**

- Minimal down time – keeps you productive
- No shipping charges
- Call 800-999-5099 for more information

Simpson Strong-Tie offers a full line of anchors, adhesives, P.A.T. and drill bits for all of your anchoring and fastening applications.

This flier is effective until June 30, 2017, and reflects information available as of February 1, 2015. This information is updated periodically and should not be relied upon after June 30, 2017; contact Simpson Strong-Tie for current information and limited warranty or see [www.strongtie.com](http://www.strongtie.com).