



Component Solutions™ Software Suite



As a supplier of connectors for trusses and engineered-wood products, Simpson Strong-Tie has been involved in the structural building component industry for decades. This experience has provided invaluable insights into the needs of the component manufacturer and resulted in the latest addition to the Simpson Strong-Tie® product line for light-frame construction.



Simpson Strong-Tie Integrated Component Systems

- ◆ User-friendly Simpson Strong-Tie Component Solutions™ Software Suite
- ◆ A full line of high-quality, code-listed truss connector plates
- ◆ Comprehensive training designed to get users up and running quickly, minimizing the impact of a transition on your business
- ◆ Industry-leading customer service from the office and manufacturing plant to the jobsite and every point in between
- ◆ Leverage the wide range of Simpson Strong-Tie structural connector and fastening solutions that create value for your customers



Component Solutions™ Software Suite Built for Your Business

We know that design and manufacturing software is a vital part of any structural component manufacturer's business. That's why Simpson Strong-Tie has set out to create a powerful program that provides manufacturers with the tools they need to efficiently design and manufacture.



For decades Simpson Strong-Tie has played a pivotal role in making wood-frame structures safer and more efficient to build.

Component Solutions™ Software Products



CS Build

Create 3D Models of Floor, Wall and Roof Systems

- ✦ Significant flexibility for variations in framing solutions
- ✦ Label, consolidate, and export trusses for final design, engineering and shop output
- ✦ Define building geometry, loading information and truss layout in a 3D model
- ✦ Transfer loads from roof to walls to floors throughout the 3D model

Panel Plugin

- ✦ Allows users to define customized wall framing into CS Build models
- ✦ Provides flexibility for variations in wall-framing practices
- ✦ Generates material reports and shop output

EWP Plugin

- ✦ Automates the generation and propagation of gravity loads throughout the model
- ✦ Analyzes and specifies material solutions for structural members
- ✦ Automates the selection of structural connectors/hangers
- ✦ Generates EWP layouts, material list and hanger schedules



CS Truss

Define and Design Metal-Plate-Connected Wood Trusses for Roofs and Floors

- ✦ Create trusses from scratch or import from CS Build
- ✦ Define and optimize webbing
- ✦ Calculate forces and design members and plates
- ✦ Generate engineered drawings for seal by a Professional Engineer
- ✦ Create cutting lists and assembly drawings
- ✦ Produce output files for automated saws and tables

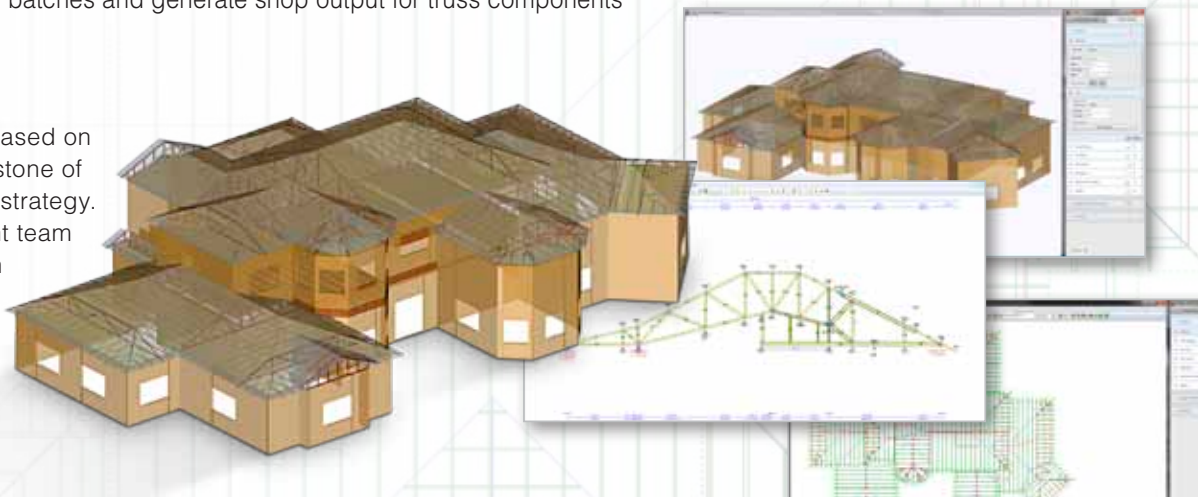


CS Manage

Job Management Tool

- ✦ CS Manage databases can be located on a centralized network server so data can be shared
- ✦ Manage preset and job files, controlled job check-in, check-out, and archiving; track job history, job level and summary reporting, quoting, invoicing, and scheduling
- ✦ Manage jobs from quote to order to invoice
- ✦ Import truss, panel and EWP job items
- ✦ Define batches and generate shop output for truss components

- ▶ Continuous improvement based on customer input is a cornerstone of our software-development strategy. Our sales and development team will be working closely with users to identify areas where we can expand functionality to increase versatility and efficiency in future releases.





CS Estimate

Setup and Track Material Inventory, Costs, and Pricing

- ✦ Works with CS Suite programs to gather all job materials for product substitution, job quoting, job invoicing, and creation of shipping tickets
- ✦ Data can be located on a centralized network server; allowing job, inventory, and pricing information to be shared by many users
- ✦ Compatible with many third-party ERP systems
- ✦ Utilize the geometric data from CS Build to aid in material estimates



CS Beam

Single-Member Sizing Program for Beams, Headers, and Joists

- ✦ Define design-criteria applied loads, and specify hole size and location to account for MEP and field alterations
- ✦ Design solid-sawn lumber, glulam, I-joist, SCL, and hot-formed steel



CS Column

Single-Member Sizing Program for Columns and Tall Wall Studs

- ✦ Define design criteria; axial loads, wind loads and bracing conditions
- ✦ Design solid-sawn lumber, glulam, and SCL structural columns



CS Link

Submit Files Electronically for Engineering Review of EWP and Truss Components

- ✦ Request engineered/sealed component drawings for new jobs and repairs



CS Plot

Customize and Finalize Construction Drawings

- ✦ Customize plotting templates including page layout, title box, notes and details
- ✦ Print final construction documents from the CS Suite



CS CAD

CAD Program Compatible with the DWG File Format

- ✦ Create, edit, and output construction drawings



CS Update

Download and Install the Latest Software and Product Updates

A heritage of
integrity, leadership
and putting the
customer first.



Setup a demo today

Component Solutions™ Software Suite

EWP Lite	EWP Edition	Truss Edition	Panel Edition
<p>Software included:</p> <ul style="list-style-type: none"> ◆ CS Beam ◆ CS Column ◆ CS Link ◆ CS Update 	<p>Software included:</p> <ul style="list-style-type: none"> ◆ CS Build (with EWP plugin) ◆ CS Estimate ◆ CS Beam ◆ CS Column ◆ CS Link ◆ CS Plot ◆ CS Update <p>Optional software:</p> <ul style="list-style-type: none"> ◆ CS Manage ◆ CS CAD ◆ EWP Product Info (for EWP plugin) 	<p>Software included:</p> <ul style="list-style-type: none"> ◆ CS Build (with EWP plugin) ◆ CS Truss ◆ CS Manage ◆ CS Estimate ◆ CS Link ◆ CS Plot ◆ CS Update <p>Optional software:</p> <ul style="list-style-type: none"> ◆ CS Beam ◆ CS Column ◆ CS CAD ◆ EWP Product Info (for EWP plugin) ◆ Panel plugin 	<p>Software included:</p> <ul style="list-style-type: none"> ◆ CS Build (with Panel plugin) ◆ CS Manage ◆ CS Estimate ◆ CS Link ◆ CS Plot ◆ CS Update <p>Optional software:</p> <ul style="list-style-type: none"> ◆ CS Beam ◆ CS Column ◆ CS CAD ◆ EWP plugin ◆ EWP Product Info (for EWP plugin)

Which edition is right for my business?

<p>Best for:</p> <ul style="list-style-type: none"> ◆ EWP Manufacturers ◆ Wholesale lumber yards ◆ Lumber yards 	<p>Best for:</p> <ul style="list-style-type: none"> ◆ EWP Manufacturers ◆ Wholesale lumber yards ◆ Lumber yards 	<p>Best for:</p> <ul style="list-style-type: none"> ◆ Truss yards (Roof truss and/or floor truss manufacturers) ◆ Truss manufacturers and lumber yards (EWP plugin required) ◆ Truss and panel manufacturers and lumber yards (Panel and EWP plugin required) ◆ Truss and panel manufacturers (Panel plugin required) 	<p>Best for:</p> <ul style="list-style-type: none"> ◆ Wall panel design/production facilities ◆ Panel manufacturers and lumber yards (EWP plugin required)
---	---	--	---



800-999-5099 | www.strongtie.com